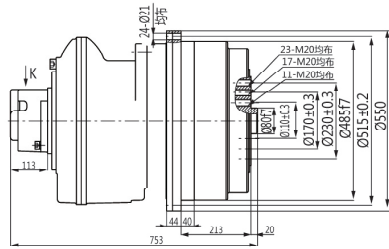
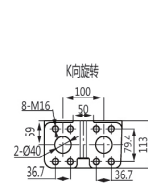
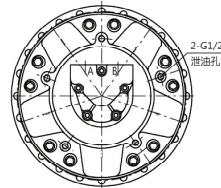


GFR6 液压传动装置 GFR6 Hydraulic Transmission Devices

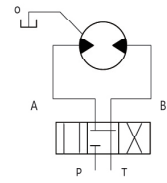
◆无制动器 / Without brake



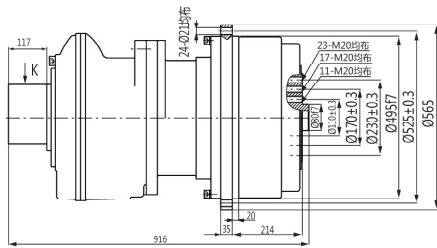
A口进油 inlet ← B口进油 inlet



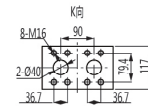
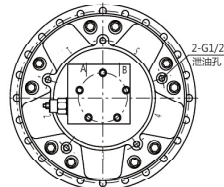
液压原理图
Hydraulic schematic diagram



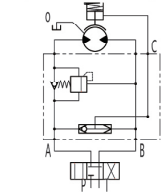
◆带制动器 (外置式) / With brake and external installation



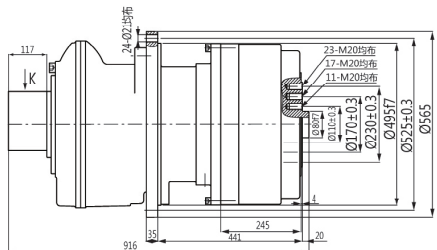
A口进油 inlet ← B口进油 inlet



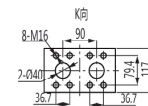
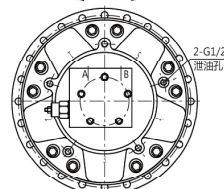
液压原理图
Hydraulic schematic diagram



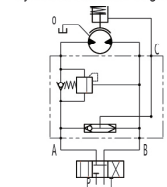
◆带制动器 (内置式) / With brake and internal installation



A口进油 inlet ← B口进油 inlet

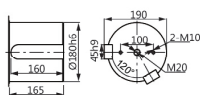


液压原理图
Hydraulic schematic diagram

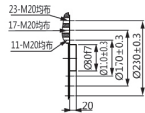


◆输出轴尺寸 / Shaft dimensions

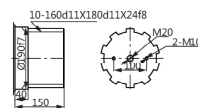
B型平键输出 Cylindrical B



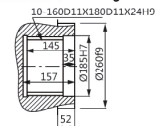
C型螺纹法兰输出 Threaded flange C



F型矩形花键输出 Rectangle splined F



I型内花键输出 Rectangle internal spline I



型号 Model	总排量 (ml/r) Total displacement	额定扭矩 (N.m) Rated torque	转速范围 Speed	总效率 Total efficiency	液压马达型号 Hydraulic motor	行星减速器型号 Poanetary gearbox	制动器型号 Brake
		20MPa					
GFR6-10500	12468	30046	0-40	0.9-0.91	GM6-2100	C6-5	Z6
GFR6-12500	12565	35476	0-40	0.9-0.91	GM6-2500	C6-5	Z6
GFR6-15200	15205	42987	0-40	0.9-0.91	GM6-3000	C6-5	Z6
GFR6-16500	16725	47286	0-30	0.9-0.91	GM6-3000	C6-5.5	Z6
GFR6-20000	19860	57141	0-30	0.9-0.91	GM7-3600	C6-5.5	Z6

注：外形联结尺寸及输出轴有特殊要求，请与我们联系 / Note: Please contact us if there are any requirements from customer