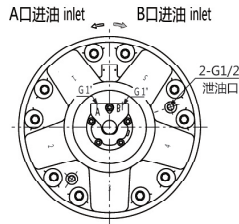
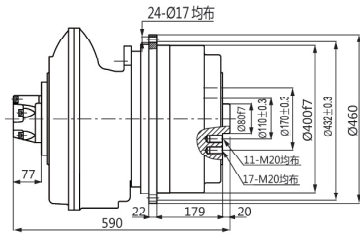
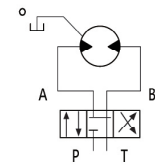


GFR5 液压传动装置 GFR5 Hydraulic Transmission Devices

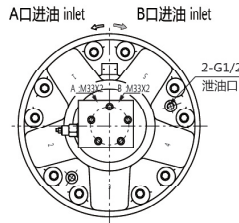
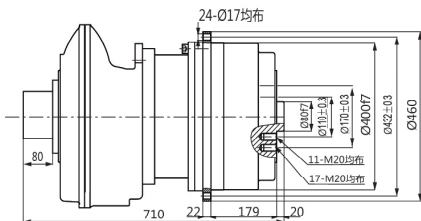
◆无制动器 / Without brake



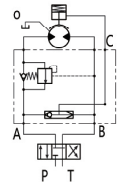
液压原理图
Hydraulic schematic diagram



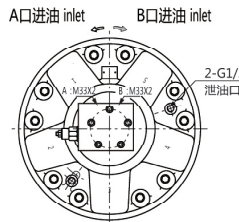
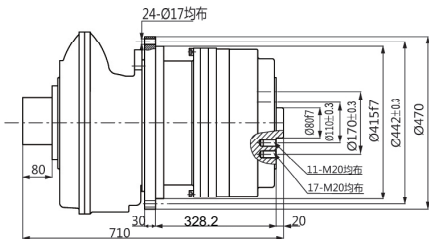
◆带制动器 (外置式) / With brake and external installation



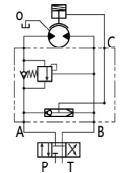
液压原理图
Hydraulic schematic diagram



◆带制动器 (内置式) / With brake and internal installation

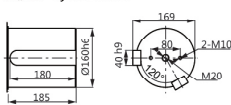


液压原理图
Hydraulic schematic diagram

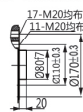


◆输出轴尺寸 / Shaft dimensions

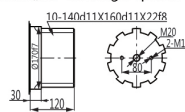
B型平键输出 Cylindrical B



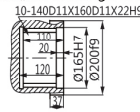
C型螺纹法兰输出 Threaded flange C



F型矩形花键输出 Rectangle splined F



I型内花键输出 Rectangle internal spline I



型号 Model	总排量 (ml/r) Total displacement	额定扭矩 (N.m) Rated torque	转速范围 Speed	总效率 Total efficiency	液压马达型号 Hydraulic motor	行星减速器型号 Poanetary gearbox	制动器型号 Brake
		20MPa					
GFR5-5200	5195	14596	0-70	0.9-0.91	GM5-1000	C5-5	Z5
GFR5-5700	5714	16056	0-65	0.9-0.91	GM5-1000	C5-5.5	Z5
GFR5-6000	5925	16742	0-70	0.9-0.91	GM5-1200	C5-5	Z5
GFR5-6700	6700	18915	0-70	0.9-0.91	GM5-1300	C5-5	Z5
GFR5-7300	7310	20634	0-70	0.9-0.91	GM5-1450	C5-5	Z5
GFR5-8150	8170	22987	0-70	0.9-0.91	GM5-1600	C5-5	Z5
GFR5-9000	9080	25612	0-70	0.9-0.91	GM5-1800	C5-5	Z5
GFR5-10000	9988	28173	0-60	0.9-0.91	GM5-1800	C5-5.5	Z5
GFR5-11000	11039	31159	0-50	0.9-0.91	GM5-2000	C5-5.5	Z5

注：外形联结尺寸及输出轴有特殊要求，请与我们联系 / Note: Please contact us if there are any requirements from customer