

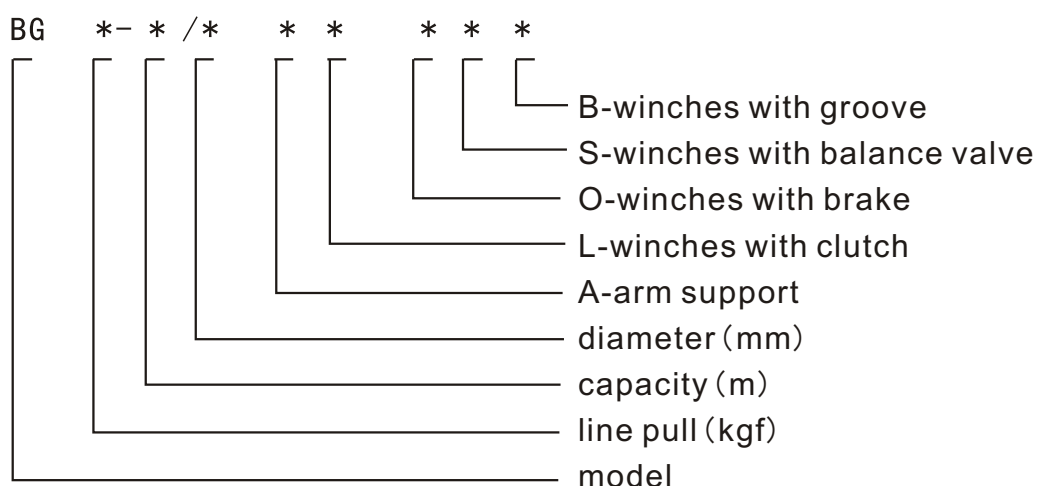
## BG series hydraulic winches

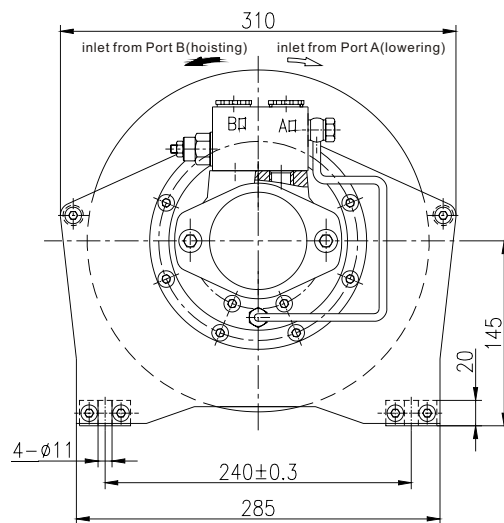
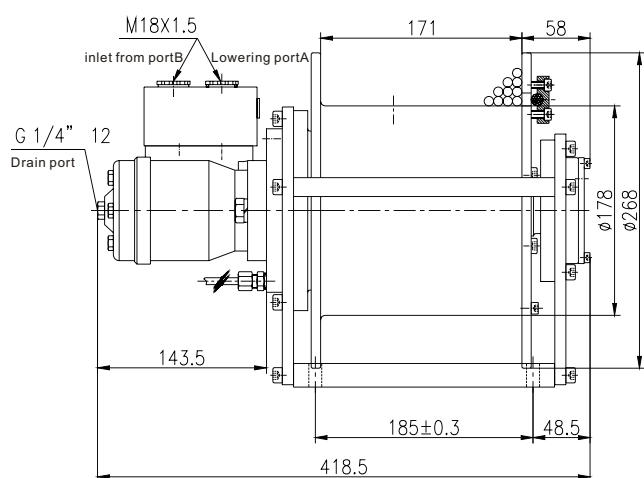


### 一、PRODUCT OVERVIEW:

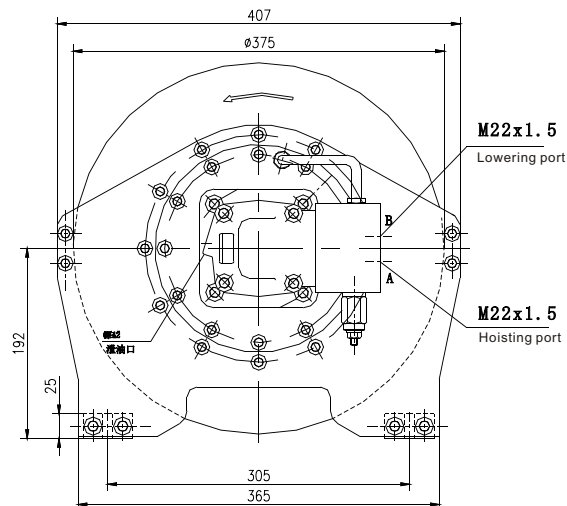
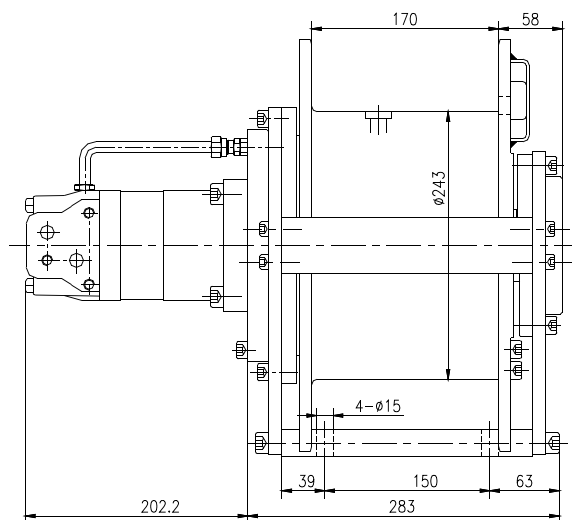
BG series hydraulic winches are based on Italy technology. It is made up of gerotor motor, hydraulic multi-disc brake normally closed, planet gearbox decelerator, reel and so on. In order to meet the different needs of our customers, it can install balance valve, overload valve, high pressure valve, and any other equipments while the only thing that our customer need to do is to provide hydraulic power unit and shuttle valve. The winch is equipped with valve box so it is not only simplified the hydraulic system but also improve the stability of transmission. It has many excellent features as follows: high starting efficiency, good performance, beautiful appearance, low noise, low oil flow, compact structure, reliable operation and economical. Since the series of winches have the above advantages, it is widely used in ships, petroleum, mining, railway, engineering machinery, geological exploration, and metallurgical industries, especially for those industries of high-altitude platform and lorry-mounted crane which requires narrow space and light weight, it is the best choice for them to choose.

### 二、Model Description:

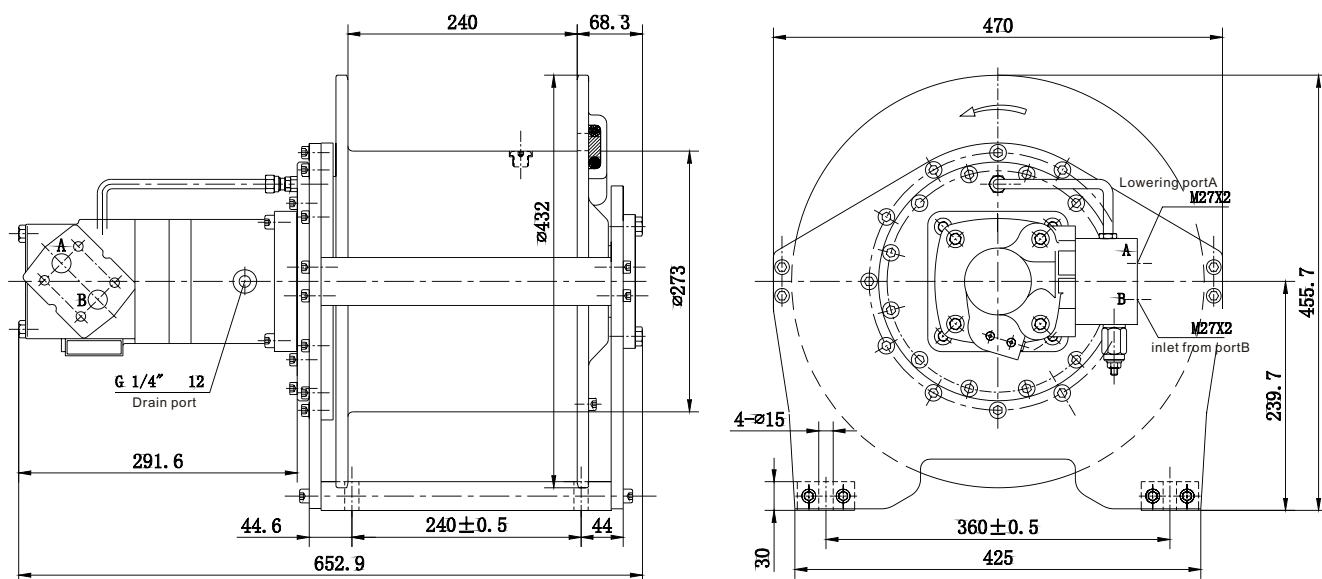




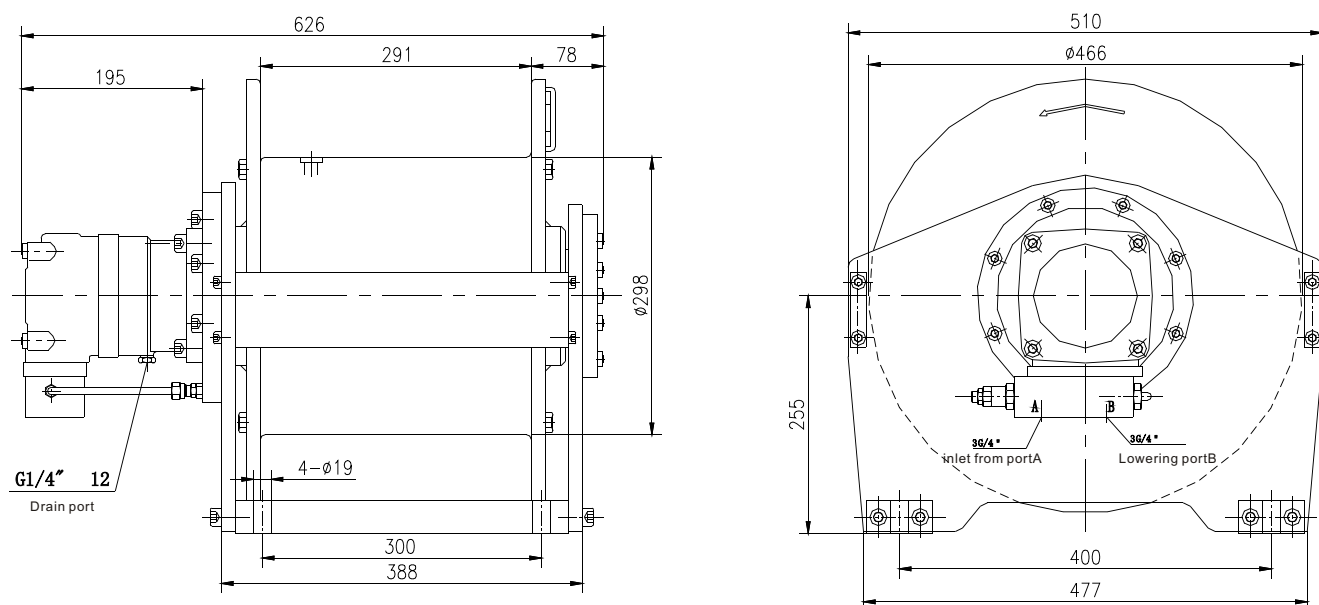
Model	Line Pull (kgf)	Total Displacement (ml/r)	Hoisting Pressure (mpa)	Rope Speed (m/min)	Diameter (mm)	Layer	Capacity Of Rope (m)	Weight (kg)	Motor
BG 500	500	416	14	63	6	4	67	45	OMP-80
BG 800	800	520	14	54	8	4	53	45	OMP-100
BG1100	1100	650	14	41	8	4	53	45	OMP-125
BG1300	1300	832	14	45	9	4	48	45	OMP-160



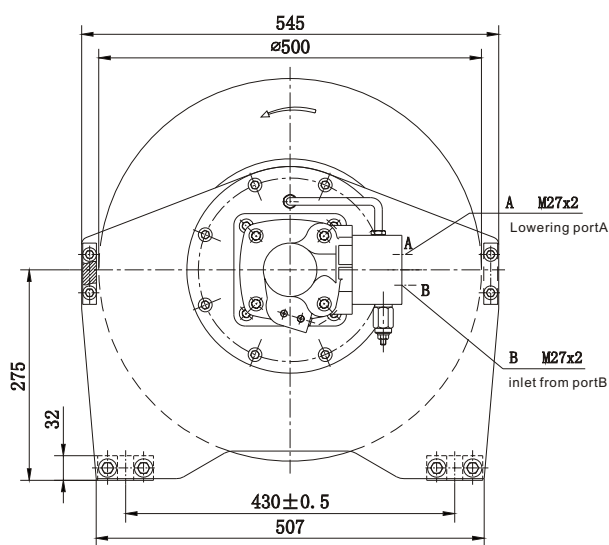
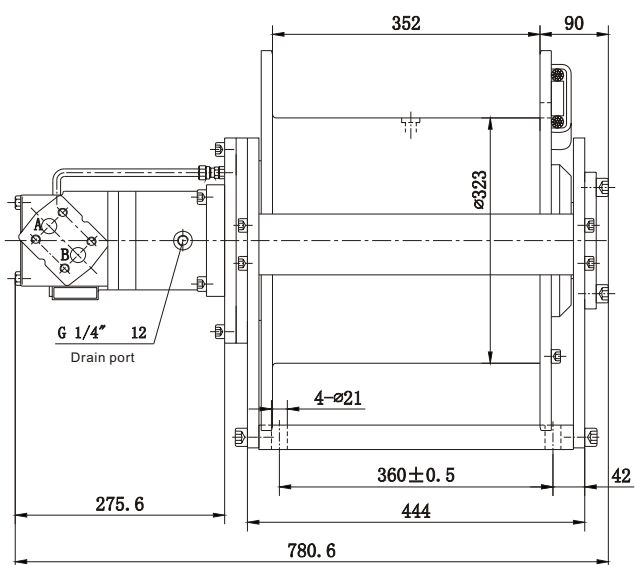
Model	Line Pull (kgf)	Total Displacement (ml/r)	Hoisting Pressure (mpa)	Rope Speed (m/min)	Diameter (mm)	Layer	Capacity Of Rope (m)	Weight (kg)	Motor
BG1500	1500	980	21	42	10	4	60	116	J2K-160
BG2000	2000	1200	21	35	10	4	60	116	J2K-195
BG2500	2500	1500	21	52	12	4	52	116	J6K-245



Model	Line Pull (kgf)	Total Displacement (ml/r)	Hoisting Pressure (mpa)	Rope Speed (m/min)	Diameter (mm)	Layer	Capacity Of Rope (m)	Weight (kg)	Motor
BG2600	2600	1600	21	54	12	4	76	174	J6K-245
BG3200	3200	2000	21	44	14	4	66	174	J6K-310
BG3600	3600	2600	21	40	14	4	66	174	J6K-395



Model	Line Pull (kgf)	Total Displacement (ml/r)	Hoisting Pressure (mpa)	Rope Speed (m/min)	Diameter (mm)	Layer	Capacity Of Rope (m)	Weight (kg)	Motor
BG4500	4500	2800	21	36	15	4	89	300	OMT-200



Model	Line Pull (kgf)	Total Displacement (ml/r)	Hoisting Pressure (mpa)	Rope Speed (m/min)	Diameter (mm)	Layer	Capacity Of Rope (m)	Weight (kg)	Motor
BG5700	5700	5400	21	26	16	4	102	374	J6K-245